

C

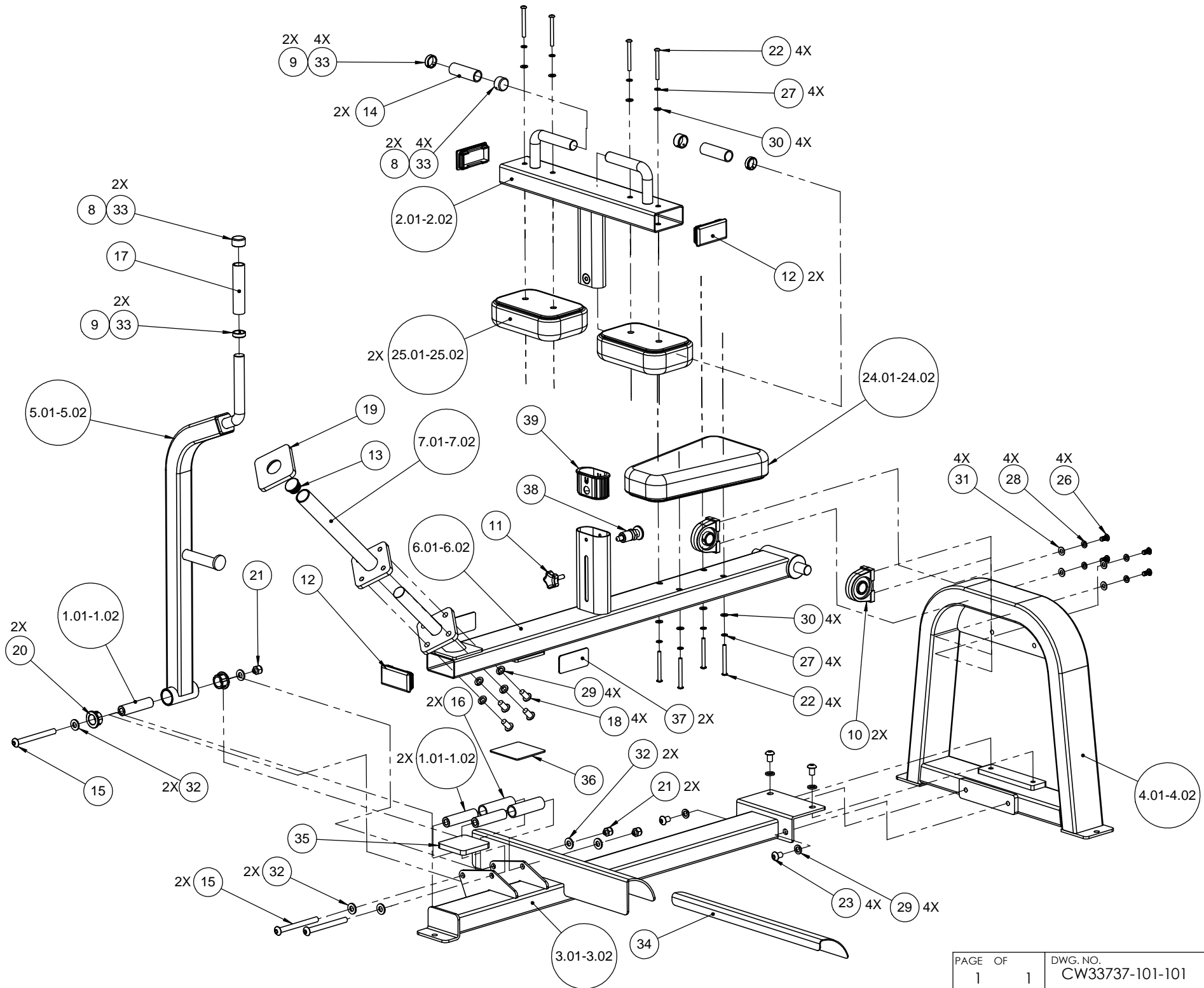
B

A

3

2

1



## 616 Seated Calf (Version 2)

Part Number	Description	Bubble Number
AP031366-101	TUBE,STEEL,RND DOM, 1/2 ID X 0.995	1.01
AP041946-101	WELDMENT,THIGH PAD,SKY WHITE	2.01
AP041946-112	WELDMENT,THIGH PAD,TITANIUM	2.02
AP041942-101	WELDMENT,BASE,SKY WHITE	3.01
AP041942-112	WELDMENT,BASE,TITANIUM	3.02
AP041943-101	WELDMENT, A-FRAME,SKY WHITE,CW616	4.01
AP041943-112	WELDMENT, MAIN FRAME, TITANIUM, CW6	4.02
AP041944-101	WELDMENT,HANDLE,SKY WHITE	5.01
AP041944-112	WELDMENT,HANDLE,TITANIUM	5.02
AP041945-101	WELDMENT,FRAME SEAT,SKY WHITE	6.01
AP041945-112	WELDMENT,FRAME SEAT,TITANIUM	6.02
AP041937-101	WELDMENT,WEIGHT HOLDER,SKY WHITE	7.01
AP041937-112	WELDMENT,WEIGHT HOLDER,TITANIUM	7.02
AP050109-901	END CAP, ALUMINUM W/SET SCREWS	8
AP050196-901	COLLAR,HANDLE RETAINER W/SET SCREWS	9
AP050262-101	BEARING,PILLOW BLOCK,2-BOLT	10
CW34549-101	ENDCAP, REC TUBE, 2X4, BLK PLASTIC,	12
AP060279-101	ENDCAP, ROUND FOOTBAR	13
AP060622-101	RUBBERGRIP, HAND DIA 1.00	14
CWTAYN050-525	SCREW, BUTTON HEAD, BLK XYLAN, 1/2	15
AP060903-101	GRIP,RUBBER,SPACER, DIA 1" X 4.0"	16
AP060907-101	GRIP, HAND, DIA 1.00	17
CWTAYN050-100	SCREW, BUTTON HEAD, BLK XYLAN, 1/2	18
AP060898-101	CREPE,CUT PIECE, 7/16 X 4 X 4, 1 HO	19
AP080032-101	BUSHING, BRONZE	20
CWKDYN050-059	LOCKNUT, NYLON INSERT, FULL, UNC, 1	21
CWTAYN031-300	SCREW, BUTTON HEAD, BLK XYLAN, 5/16	22
CWTAYN050-075	SCREW, BUTTON HEAD, BLK XYLAN, 1/2	23
CWPD1207A-101	PAD,5X9X14.5,4HOLES,BLACK	24.01
CWPD1207A-102	PAD,5X9X14.5,4HOLES,RYL BL	24.02
CWPD1112B-101	PAD,6X9,2HOLES,W/BP,BLACK	25.01
CWPD1112B-102	PAD,6X9,2HOLES,W/BP,RYL BL	25.02
CWTHMYN010-100	SCREW,BUTTON HEAD, BLK XYLAN, M10-1	26
CWWALYN031-008	WASHER, SPLIT, 5/16 ID, BL	27
CWWALYN038-009	WASHER, SPLIT, 3/8 ID, BLK XYLAN	28
CWWALYN050-013	WASHER, SPLIT, 1/2 ID, BLK XYLAN	29
CWWBKN031-007	WASHER, FLAT, TYPE A, SAE, 5/16 ID	30
CWWBKN038-007	WASHER, FLAT, TYPE A, SAE, 3/8 ID	31
CWWBKN050-010	WASHER, FLAT, TYPE A, SAE, 1/2 ID X	32
CWEANN016-013	SCREW, SET, SCKT, CUP POINT, 8-32 X	33
AP120141-101	GRIP, TAPE	34
AP060905-101	CREPE,CUT PIECE,7/16 X 3 3/4 X 3 3/4	35
AP060906-101	CUT PIECE,ABS CHANNEL, 1/8 X 4 X 4	36
AP060908-101	CUT PIECE,ABS CHANNEL, 1/8 X 2 X 4	37
AP110203-751	POP PIN,SHORT,ADJUSTABLE,BLUE ANODI	38
AP060528-101	GUIDE INSERT, PLASTIC	39
CW10186-105	WRENCH, ALLEN 6MM (4-5/8)	40
CW10186-110	WRENCH, ALLEN, 8MM	41

CW10186-117	WRENCH, ALLEN 5MM	42
CW34507-101	KIT, HARDWARE, CW616	200